



SHOP FACILITIES

| | |
|--------------------------------------------------------------------------------------|--------------|
| AREA UNDER ROOF | 50k SQ FT |
| UNCOVERED AREA | 10 ACRES |
| LARGEST FABRICATED ITEM | 48" DIA |
| SEPARATED AREA FOR STAINLESS | YES |
| SUBMERGED ARC WELDING STATIONS (SAW) | 2 |
| TUNGSTEN INERT ARC WELDING MACHINES (TIG) | 10 |
| GAS METAL ARC WELDING MACHINES (GMAW/FCAW) | 10 |
| TECNAR ROTOWELD ROBOTIC WELDING STATION (MAX DIAMETER; 42") | 1 |
| VERNON-LINCOLN ELECTRIC CNC PLASMA PIPE CUTTING MACHINE (MAX DIAMETER; 48") | 1 |
| MATERIALS QUALIFIED FOR WELDING; CARBON, STAINLESS, INCONEL etc. | |
| SAW WELDING DIMENSION CAPABILITIES | 360"X48" |
| SPOOL PRODUCTION CAPACITY PER MONTH (SINGLE SHIFT) | 600 |
| OVERHEAD CRANE AND CAPACITY | 3-5 TON |
| MAXIMUM CRANE LIFTING HEIGHT | 300" |
| OTHER LIFTING EQUIPMENT; VARIOUS JIB & GANTRY CRANES | 1 THRU 3 TON |
| FORK LIFTS: 2 | 6000# |
| TELEHANDLER: 1 | 5500# |
| STRESS/HEAT TREATMENT CAPABILITIES: SUB-CONTRACTED | |
| HYDROSTATIC TEST STATION | 5000PSI |
| CAPABLE OF PERFORMING ALL NDE PROCESSES | |
| HEAT TREATMENT IS SUBCONTRACTED | |
| SURFACE BLAST AND PAINT IS SUBCONTRACTED (7 APPROVED PAINTING COMPANIES IN TULSA) | |
| IN-HOUSE STATUS AND REPORTING PROVIDED | eSpool |
| MATERIAL CONTROL, INBOUND AND FREE ISSUE | eSpool |
| COMPLETE DATA PACKAGES PROVIDED BY | eSpool |

GET IN TOUCH WITH US

MW PIPING
FABRICATIONS LLC

5001 West 21st Street - Tulsa, OK 74107

Tel: (918) 779-7779

mwpipingfab.com

LONG-TERM COMMITMENT TO QUALITY AND SERVICE



Dedicated to
On-Time Delivery
of Quality
Pre-fabricated
Piping Systems to
Customer
Requirements

mwpipingfab.com

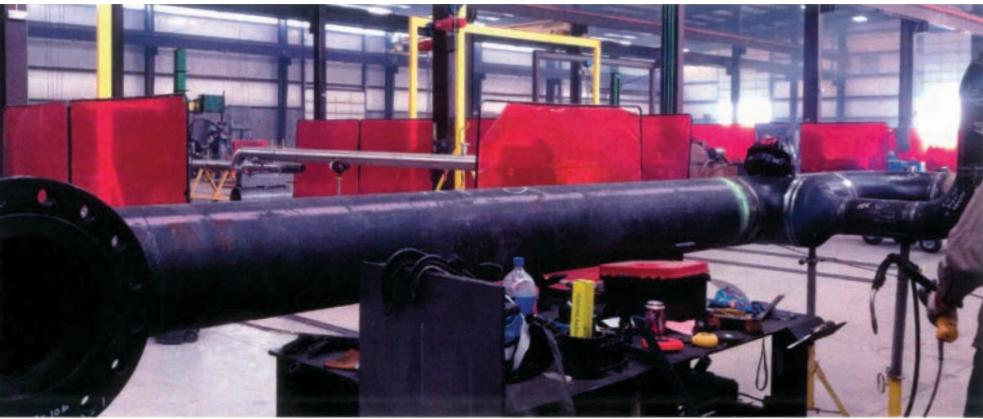
MISSION
Safely produce
fabricated piping
systems with
excellence in quality
and on time delivery.



**EXPERIENCE
INNOVATION
QUALITY
TRUST**

M W Piping Fabrication, LLC is the revival of a 40 year old company with a reputation and commitment to superior service. Today, we are leading the way with a new 50,000SF state-of-the-art facility with time saving equipment such as the Rotoweld 3.0, Vernon MPM, and revolutionary eSPL manufacturing management system. To ensure your job moves quickly and safely, we utilize our unique pipe spool handling and safety skid equipment.

To learn more visit our website or contact our sales department.



PIPE SHOP FABRICATION CAPABILITIES

- 50,000 sq. ft. brand new manufacturing plant and offices
- Capacity Per Month - Single Shift
- 750 - 1000 spools
- (3) Bays - 50 ft by 250 ft
- (3) 5 TON Bridge Cranes
- Column and jib cranes

Inventory of standard stock material on-site which is in designated enterprise zone.

Materials: Ferrous and Non-ferrous materials of multiple types

Automated robotic welding and cutting equipment. The all new Vernon Cutter and Rotoweld system.

SHOP SURVEY

ROTOWELD 3.0 The future of 1G welding

The core of the Rotoweld technology is its unique vision-based penetration control system. It enables any operator to perform high-quality girth welds after just a few hours of training.

Like the welder's eyes and hands, the system continuously analyzes the image of the root weld pool picked up by a video camera integrated into the welding arm. Unique algorithms use this information to adjust welding parameters, such as travel speed; wire feed rate, arc voltage or weaving width. This constantly adapts the process to varying conditions, such as changes in gap, alignment, root face or temperature. The computer's fast reaction time means the machine can work at high deposition rates and travel speeds at which weld pool conditions are too critical to be sustained by hand.

VERNON TOOL MPM

The Vernon Tool MPM is a robust and proven pipe profiling solution that has been known to last 50+ years in the field. The build and design of this industrial CNC pipe cutting machine will be sure to stand the test of time in some of the harshest cutting environments on the planet. Whether your pipe cutting application requires oxy-fuel or high definition plasma cutting, you can rely on the Venon Tool MPM to consistently provide high quality beveled and weld prep ready cuts.

eSPL MANUFACTURING RESOURCE PLANNING

- Control of entire Fabrication Program (from receipt of isometrics to delivery of complete piping systems)
- Integration of engineering data, isometrics, spool drawings, specifications and procedures.
- Management and Control of Materials from requisition to completion, including full MTR traceability.
- Control of Production, Production Forecast, Inspection/NDE, Shipments
- Documentation Control, Automatic Generation of Electronic Doc. Packs
- Reporting with Paperless Environment

